



2015
SUPER DUTY[®]
CHASSIS CAB



SPECIFICATIONS

SUPER DUTY CHASSIS CAB SPECIFICATIONS



STANDARD FEATURES

Mechanical

Gas engine tune-up interval: 97,500 miles²
 Diesel engine service intervals as indicated in message center: oil 10,000 miles; fuel filter 22,500 miles; coolant 105,000 miles or 6 years, whichever comes first
 Auxiliary rear springs
 Battery saver
 Engine-only traction control (EOTC) (DRW only)
 Fail-Safe Engine Cooling System (gas engines)
 Fuel tank – 28-gallon midship (SRW)
 Fuel tank – 40-gallon aft-of-axle (DRW)
 Hill start assist (SRW only)
 Power steering
 Stabilizer bars – Front and rear
 Stainless steel exhaust system (major components)
 Stationary elevated idle control (SEIC)³
 Steering damper
 Trailer sway control (SRW only)
 Trailer tow prep includes 7-wire harness (blunt-cut) with relays

Interior

Air conditioning
 Assist and ride handles
 Coat hooks – 1 (Regular Cab); 2 in rear of cab (SuperCab and Crew Cab)
 Dome light (front and rear with Crew Cab)
 Overhead console with garage door opener storage and sunglasses storage (SuperCab and Crew Cab)
 Powerpoints – 12-volt, 2 on instrument panel
 Upfitter switches – 4 on instrument panel
 Windows – Flip-open rear quarter (SuperCab)

Exterior

Dual-beam jewel-effect headlamps
 Intelligent 3-blink turn signal
 Roof clearance lamps
 Tow hooks – Black, 2 in front
 Underhood service lamp
 Windshield wipers – Intermittent

Safety & Security

AdvanceTrac[®] with RSC[®] (Roll Stability Control[™]) (SRW only)
 Airbags⁴ – Driver and right-front-passenger front
 Airbags⁴ – Front-seat side
 Airbags⁴ – Safety Canopy[®] System with side-curtain airbags for all rows and rollover sensor
 Belt-Minder[®] front safety belt reminder
 Brake/shift interlock
 Brakes – Power 4-wheel vented-disc with Anti-Lock Brake System (ABS)
 Child-safety-seat top tether anchors (Regular Cab front passenger and all rear-seat positions)
 Fuel pump inertia shutoff switch
 Headlamps-on, key-in-ignition and door-ajar alert chimes
 Passenger airbag deactivation switch (Regular Cab, SuperCab)
 Safety belts – Energy-management retractors at front-outboard positions
 Safety belts – Height-adjustable safety belts at front-outboard positions
 Side-intrusion door beams
 SOS Post-Crash Alert System[™]

MODELS

F-350

Maximum Capabilities¹

5th-Wheel Towing: 16,600 lbs.
 Conventional Towing: 15,000 lbs.
 Payload: 7,872 lbs.
 GCWR: 24,500 lbs.
 GVWR: 14,000 lbs.
 Front GAWR: 5,250 lbs. (4x2); 6,000 lbs. (4x4)

Equipment Configurations

Engines: 6.2L Gas V8 Flex Fuel E85-capable
 6.7L Power Stroke[®] V8 Turbo Diesel
 B20-capable
 Drivelines: 4x2 or 4x4 • Single Rear Wheel or Dual Rear Wheel
 Bodies: Regular Cab, SuperCab, Crew Cab
 Trim Series: XL, XLT, LARIAT

F-450

Maximum Capabilities¹

5th-Wheel Towing: 21,600 lbs.
 Conventional Towing: 16,000 lbs.
 Payload: 9,945 lbs.
 GCWR: 30,000 lbs.
 GVWR: 16,500 lbs.
 Front GAWR: 7,000 lbs.

Equipment Configurations

Engines: 6.8L Triton[®] Gas V10
 6.7L Power Stroke V8 Turbo Diesel
 B20-capable
 Drivelines: 4x2 or 4x4 • Dual Rear Wheel only
 Bodies: Regular Cab, SuperCab, Crew Cab
 Trim Series: XL, XLT, LARIAT

F-550

Maximum Capabilities¹

5th-Wheel Towing: 26,600 lbs.
 Conventional Towing: 16,000 lbs.
 Payload: 12,660 lbs.
 GCWR: 35,000 lbs.
 GVWR: 19,500 lbs.
 Front GAWR: 7,000 lbs.

Equipment Configurations

Engines: 6.8L Triton Gas V10
 6.7L Power Stroke V8 Turbo Diesel
 B20-capable
 Drivelines: 4x2 or 4x4 • Dual Rear Wheel only
 Bodies: Regular Cab, SuperCab, Crew Cab
 Trim Series: XL, XLT, LARIAT

PICKUP BOX DELETE

Available on F-250 and F-350 Pickups with any 8' box wheelbase. Includes 2½" trailer hitch receiver (for the maximum conventional trailer tow ratings of the vehicle, look for the similar configuration with pickup box in the RV & Trailer Tow Guide). Deletes pickup box, tie-down hooks, bodyside moldings, rear bumper, spare wheel, tire, carrier and jack.

¹When properly equipped. ²Under normal driving conditions with routine fluid and filter changes. ³Final-stage manufacturer must supply control switches. ⁴Always wear your safety belt and follow airbag warning label instructions. Passenger airbag may be deleted.





F-350 XL Regular Cab 4x2, Oxford White. XL Appearance Package. Available and aftermarket upfit equipment.



XL Regular Cab. Steel HD vinyl. XL Appearance Package. Available equipment.

Includes all standard features, plus:

Mechanical

6.2L SOHC 2-valve Gas V8 Flex Fuel E85-capable engine (F-350)

6.8L Triton® SOHC 3-valve Gas V10 engine (F-450/F-550)

TorqShift® Heavy-Duty 6-speed SelectShift® automatic transmission (F-350)

TorqShift 5-speed automatic transmission (F-450/F-550)

Alternator – 157-amp heavy-duty (F-350)

Alternator – 175-amp heavy-duty (F-450/F-550)

Manual 4-Wheel-Drive System with manual locking hubs (4x4 models only)

17" argent-painted steel wheels (F-350)

19.5" argent-painted steel wheels (F-450/F-550)

LT245/75R17E all-season BSW tires (F-350)

225/70R19.5G all-season BSW tires (F-450/F-550)

Seating

HD vinyl 40/20/40 split front seat with center armrest, dual cupholders and storage

60/40 split flip-up rear bench seat (SuperCab only)

60/40 split flip-up/fold-down rear bench seat with outboard and center head restraints (Crew Cab only)

Manual lumbar support for driver's seat

Interior

AM/FM stereo with digital clock and 2 speakers

Climate controls – Manual

Door locks – Manual

Flooring – Black vinyl

Message center – Multifunction with trip computer includes odometer, trip odometer, engine-hour meter, distance to empty, average fuel economy, oil-life monitor, warning messages, system check, language selection and Ice Blue® Lighting

Mirror – Manual day/night rearview

Operator-commanded exhaust filter regeneration (6.7L diesel engine only)

Power take-off (PTO) provision (6.8L gas and 6.7L diesel engines only; includes transmission-mounted live-drive and stationary modes with diesel engine only)

Rear axle – Electronic-locking (F-350 SRW only)

Rear axle – Limited-slip (LS) (DRW only)

Spare tire/wheel/jack

Speed limitation – 65-mph top governed speed (n/a with 6.8L engine; Fleet only)

Speed limitation – 75-mph top governed speed (n/a with 6.8L engine; Fleet only)

Tire Pressure Monitoring System delete (Fleet only)

17" 6-spoke cast-aluminum wheels (F-350 SRW)

17" polished forged-aluminum wheels (F-350 DRW)

Stainless steel wheel covers (DRW only; requires 17" or 19.5" argent-painted steel wheels)²

18" argent-painted steel wheels – 4 (F-350 SRW)

LT245/75R17E all-terrain BSW tires – 4 (F-350 SRW); 6 (F-350 DRW)

LT275/65R18E all-season BSW tires – 4 (F-350 SRW)

LT275/70R18E all-terrain BSW tires – 4 (F-350 SRW 4x4 only)

225/70R19.5G BSW traction tires – 2 all-season tires and 4 traction tires (F-450/F-550)

225/70R19.5G max. traction BSW tires – 6 (F-450/F-550 4x4 only)

225/70R19.5G max. traction BSW tires – 6 (F-450/F-550 4x4 only)

225/70R19.5G max. traction BSW tires – 6 (F-450/F-550 4x4 only)

225/70R19.5G max. traction BSW tires – 6 (F-450/F-550 4x4 only)

225/70R19.5G max. traction BSW tires – 6 (F-450/F-550 4x4 only)

225/70R19.5G max. traction BSW tires – 6 (F-450/F-550 4x4 only)

225/70R19.5G max. traction BSW tires – 6 (F-450/F-550 4x4 only)

225/70R19.5G max. traction BSW tires – 6 (F-450/F-550 4x4 only)

225/70R19.5G max. traction BSW tires – 6 (F-450/F-550 4x4 only)

225/70R19.5G max. traction BSW tires – 6 (F-450/F-550 4x4 only)

225/70R19.5G max. traction BSW tires – 6 (F-450/F-550 4x4 only)

225/70R19.5G max. traction BSW tires – 6 (F-450/F-550 4x4 only)

225/70R19.5G max. traction BSW tires – 6 (F-450/F-550 4x4 only)

225/70R19.5G max. traction BSW tires – 6 (F-450/F-550 4x4 only)

225/70R19.5G max. traction BSW tires – 6 (F-450/F-550 4x4 only)

225/70R19.5G max. traction BSW tires – 6 (F-450/F-550 4x4 only)

225/70R19.5G max. traction BSW tires – 6 (F-450/F-550 4x4 only)

225/70R19.5G max. traction BSW tires – 6 (F-450/F-550 4x4 only)

225/70R19.5G max. traction BSW tires – 6 (F-450/F-550 4x4 only)

225/70R19.5G max. traction BSW tires – 6 (F-450/F-550 4x4 only)

225/70R19.5G max. traction BSW tires – 6 (F-450/F-550 4x4 only)

225/70R19.5G max. traction BSW tires – 6 (F-450/F-550 4x4 only)

225/70R19.5G max. traction BSW tires – 6 (F-450/F-550 4x4 only)

225/70R19.5G max. traction BSW tires – 6 (F-450/F-550 4x4 only)

225/70R19.5G max. traction BSW tires – 6 (F-450/F-550 4x4 only)

225/70R19.5G max. traction BSW tires – 6 (F-450/F-550 4x4 only)

225/70R19.5G max. traction BSW tires – 6 (F-450/F-550 4x4 only)

225/70R19.5G max. traction BSW tires – 6 (F-450/F-550 4x4 only)

225/70R19.5G max. traction BSW tires – 6 (F-450/F-550 4x4 only)

225/70R19.5G max. traction BSW tires – 6 (F-450/F-550 4x4 only)

225/70R19.5G max. traction BSW tires – 6 (F-450/F-550 4x4 only)

225/70R19.5G max. traction BSW tires – 6 (F-450/F-550 4x4 only)

225/70R19.5G max. traction BSW tires – 6 (F-450/F-550 4x4 only)

225/70R19.5G max. traction BSW tires – 6 (F-450/F-550 4x4 only)

225/70R19.5G max. traction BSW tires – 6 (F-450/F-550 4x4 only)

225/70R19.5G max. traction BSW tires – 6 (F-450/F-550 4x4 only)

Exterior

Cab steps – 6" angular black molded

Center high-mounted stop lamp (required for vehicles with GVWR less than 10,000 lbs.)

Crew Chief™ powered by Telogis®² – Fleet tracking system (Includes 1 year of Crew Chief service)

Daytime running lamps (Fleet only)

Exterior back-up alarm²

Remote Start System (requires Power Equipment Group)

Splash guards/mud flaps (F-350 only; front only)

Transfer case skid plate (4x4 SuperCab and Crew Cab only)

Available Packages

Power Equipment Group includes power door locks and front windows (plus rear on Crew Cab) with one-touch-up/-down front window feature; upgraded interior door-trim panels; manually telescoping trailer tow mirrors with 2-way fold, power/heated glass, heated manual spotter mirrors, and integrated clearance lamps and turn signals; accessory delay; Remote Keyless Entry System with 2 integrated keyhead transmitter remotes; MyKey®; SecurILock® Passive Anti-Theft System; and perimeter anti-theft alarm

XL Appearance Package (n/a with XL Value Package) includes AM/FM stereo/single-CD player with MP3 capability, digital clock, 4 speakers and auxiliary audio input jack; cruise control; 17" argent-painted steel wheels with bright center caps (SRW only); chrome grille surround; and chrome front bumper

XL Décor Group includes chrome front bumper with grained top cover, and bright hub covers and center ornaments (hub covers and center ornaments included with SRW only)

XL Value Package (n/a with XL Appearance Package) includes AM/FM stereo/single-CD player with MP3 capability, digital clock, 4 speakers and auxiliary audio input jack; cruise control; chrome front bumper with grained top cover; and bright hub covers and center ornaments (hub covers and center ornaments included with SRW only)

16,000-lb. GVWR Package (F-450 only)

Ambulance Prep Package (Fleet only; diesel engine only; restrictions apply) includes dual alternators (combined 357 amps), maximum front springs/GAWR rating for configuration selected, standard-width rear axle with F-350 SRW, and wide-track limited-slip rear axle with F-350 DRW and operator-commanded exhaust filter regeneration

CNG/LPG Gaseous Engine Prep Package (F-350 with 6.2L gas engine only) includes hardened engine intake valves and valve seats and bi-fuel manifold

CNG/LPG Gaseous Engine Prep Package (F-450/F-550 with 6.8L gas engine only) includes hardened engine intake valves and valve seats

Extra-Heavy-Service Front Suspension Package includes 2-up front springs upgrade (unless maximum springs have been computer selected as included equipment; restrictions apply)

Fire/Rescue Prep Package with EPA special emissions for diesel engine (Fleet only; diesel engine only; restrictions apply) includes dual alternators (combined 357 amps), maximum front springs/GAWR for configuration selected, operator-commanded exhaust filter regeneration, and Federal Emissions

Heavy-Service Front Suspension Package (restrictions apply) includes 1-up front springs upgrade (unless maximum springs have been computer selected as included equipment)

High-Capacity Trailer Tow Package (F-450/F-550 only; restrictions apply) includes 30,000-lb. GCWR for F-450 and 35,000-lb. GCWR for F-550, upgraded rear-axle gear set and trailer brake wiring (trailer brake controller not included)

Low Deflection Package (F-450/F-550 only) includes 2" spacer blocks; recommended for rear-biased loading (n/a on 141" WB)

Payload Downgrade Package (F-350 SRW/F-450/F-550 only; required on F-350 SRW with 17" wheels) includes a 9,800-lb. GVWR rating for F-350 SRW with 17" wheels, a 10,000-lb. GVWR rating for F-350 SRW with 18" wheels, a 15,000-lb. GVWR rating for F-450 and a 17,500-lb. GVWR rating for F-550

Payload Upgrade Package (F-550 with 141" WB, 6.8L gas engine and 4.88 limited-slip [LS] axle only) increases GVWR to 19,000 lbs. and includes upgraded frame and rear axle

Payload Plus Upgrade Package (F-550 with 4.88 limited-slip [LS] axle only; restrictions apply) increases GVWR to 19,500 lbs. and includes upgraded frame, rear axle and springs

Snow Plow Prep Package (restrictions apply) includes computer-selected springs for snow plow application and extra-heavy-duty alternator with diesel engine only

Trailer Tow Package (restrictions apply) includes aftermarket trailer brake wiring kit (trailer brake controller not included)

¹Trailer brake controller verified to be compatible with electrically actuated drum brakes and certain electric-over-hydraulic brake systems. See your Ford Dealer for details. ²Ford Licensed Accessory. See your dealer for limited warranty details.



Argent-Painted Steel
17" Standard: F-350 SRW
18" Optional: F-350 SRW



17" Argent-Painted Steel
w/Bright Center Cap
Included: F-350 SRW w/XL Value Package,
XL Décor Group & XL Appearance Package



17" 6-Spoke Cast-Aluminum
Optional: F-350 SRW



17" Argent-Painted Steel
Standard: F-350 DRW



17" Argent-Painted Steel
w/Stainless Steel Cover
Optional: F-350 DRW



17" Polished Forged-Aluminum
Optional: F-350 DRW



19.5" Argent-Painted Steel
Standard: F-450/F-550 DRW



19.5" Argent-Painted Steel
w/Stainless Steel Cover
Optional: F-450/F-550 DRW

XL^T



F-550 XLT Regular Cab 4x2, Oxford White. Available and aftermarket upfit equipment.

Includes all XL features, plus:

Mechanical

Integrated trailer brake controller¹

17" 6-spoke cast-aluminum wheels (F-350 SRW)

Seating

4-way adjustable driver and right-front-passenger head restraints

40/20/40 split front seat with center under-seat lockable storage with 12-volt powerpoint, and center armrest with dual cupholders and storage

60/40 split flip-up/fold-down rear bench seat with bag hooks; dual integrated cupholders and tray; outboard head restraints; center head restraint; and under-seat partitioned, lockable storage with 12-volt powerpoint (Crew Cab only)

Interior

AM/FM stereo/single-CD player with MP3 capability, digital clock, 4 speakers and auxiliary audio input jack

Ford SYNC[®] voice-activated, in-vehicle connectivity system with SYNC AppLink™

SiriusXM Satellite Radio with 6-month trial subscription

Accessory delay for power features

Cruise control

Door locks – Power

Flooring – Color-coordinated carpet

Flooring – Color-coordinated carpeted floor mats MyKey[®]

Visors with covered driver and passenger mirrors

Windows – Power with front one-touch-up/-down feature



XLT Crew Cab. Steel cloth trim. Flow-through center console. Available equipment.

Exterior

Anti-theft perimeter alarm

Bumper – Chrome front with grained top cover

Glass – Privacy (rear doors and rear windows)

Grille – Chrome bar-style

Mirrors – Manually telescoping trailer tow with 2-way fold, power/heated glass, heated manual spotter mirrors, and integrated clearance lamps and turn signals

Remote Keyless Entry System with 2 integrated keyhead transmitter remotes

SecuriLock[®] Passive Anti-Theft System

Available Options

Mechanical

6.7L Power Stroke[®] V8 Turbo Diesel B20-capable engine

Electronic shift-on-the-fly (ESOF) 4-Wheel-Drive System with auto/manual locking hubs (4x4 models only; n/a with 6.8L Triton[®] V10 gas engine)

Alternator – 200-amp extra-heavy-duty (6.2L gas or 6.7L diesel engines only)

Alternators – Dual with 357-amp total (6.7L diesel engine only)

Engine block heater (standard in 15 cold-weather states)

Engine idle shutdown (6.7L diesel engine only)

Fuel tank – 28-gallon midship (n/a w/189" WB Regular Cab or 200" WB Crew Cab with gas engines)

Fuel tank – Dual tanks (40-gallon aft-of-axle and 28-gallon midship; DRW diesel engine only)

Jack – 2-ton mechanical (F-350 SRW)

Jack – 4-ton hydraulic (F-350 DRW)

Jack – 6-ton hydraulic (F-450/F-550)

Operator-commanded exhaust filter regeneration (6.7L diesel engine only)

Power take-off (PTO) provision (6.8L gas and 6.7L diesel engines only; includes transmission-mounted live-drive and stationary modes with diesel engine only)

Rear axle – Electronic-locking (F-350 SRW only)

Rear axle – Limited-slip (DRW only)

Spare tire/wheel/jack

Speed limitation – 65-mph top governed speed (n/a with 6.8L engine; Fleet only)

Speed limitation – 75-mph top governed speed (n/a with 6.8L engine; Fleet only)

Tire Pressure Monitoring System delete (Fleet only)

17" argent-painted steel wheels (F-350 SRW; Fleet only)

17" polished forged-aluminum wheels (F-350 DRW)

18" cast-aluminum wheels (F-350 SRW)

19.5" polished forged-aluminum wheels (F-450/F-550)

Stainless steel wheel covers (DRW only; requires 17" or 19.5" argent-painted steel wheels)²

LT245/75R17E all-terrain BSW tires – 6 (F-350 DRW)

LT245/75R17E all-terrain OWL tires – 4 (F-350 DRW)

LT275/65R18E all-season BSW tires – 4 (F-350 SRW)

LT275/70R18E all-terrain BSW tires – 4 (F-350 SRW 4x4)

LT275/70R18 all-terrain OWL tires – 4 (F-350 SRW 4x4)

225/70R19.5G BSW traction tires – 2 all-season tires and 4 traction tires (F-450/F-550)

225/70R19.5G max. traction BSW tires – 6 (F-450/F-550 4x4 only)

Seating

Cloth 40/console/40 front bucket seats with 6-way power driver's seat and flow-through console with lockable storage, two 12-volt powerpoints and a 110-volt power outlet (SuperCab and Crew Cab only)

Interior

Flooring – All-weather floor mats

Flooring – Carpet delete (Fleet only)

Power-adjustable pedals (included in the XLT Interior Package; Fleet only)

Rapid-heat supplemental cab heater (requires diesel engine and alternator upgrade)

Window – Rear, manual-sliding with privacy glass (Regular Cab only)

Window – Rear, power-sliding with privacy glass and defroster (SuperCab and Crew Cab only)

Exterior

Cab steps – 6" angular black molded

Center high-mounted stop lamp (required for vehicles with GVWR less than 10,000 lbs.)

Crew Chief™ powered by Telogis^{®2} – Fleet tracking system (includes 1 year of Crew Chief service)

Daytime running lamps (Fleet only)

Exterior back-up alarm²

Mirrors – PowerScope[®] power-telescoping/-folding trailer tow with power/heated glass, heated manual spotter mirrors, and integrated clearance lamps and turn signals

Remote Start System

Splash guards/mud flaps (F-350 only; front only)

Transfer case skid plate (4x4 SuperCab and Crew Cab only)

Available Packages

XLT Interior Package includes 6-way power driver's seat, power-adjustable pedals, autolamp with rainlamp feature, autolock/unlock and SecuriCode™ keyless entry keypad

16,000-lb. GVWR Package (F-450 only)

Ambulance Prep Package (Fleet only; diesel engine only; restrictions apply) includes dual alternators (combined 357 amps), standard-width rear axle with F-350 SRW, and wide-track limited-slip rear axle with F-350 DRW and operator-commanded exhaust filter regeneration

CNG/LPG Gaseous Engine Prep Package

(F-350 with 6.2L gas engine only) includes hardened engine intake valves and valve seats and bi-fuel manifold

CNG/LPG Gaseous Engine Prep Package

(F-450/F-550 with 6.8L gas engine only) includes hardened engine intake valves and valve seats

Extra-Heavy-Service Front Suspension Package

(restrictions apply) includes 2-up front springs upgrade (unless maximum springs have been computer selected as included equipment)

Fire/Rescue Prep Package with EPA special emissions for diesel engine

(Fleet only; diesel engine only; restrictions apply) includes dual alternators (combined 357 amps), maximum front springs/GAWR for configuration selected, operator-commanded exhaust filter regeneration, and Federal Emissions

Heavy-Service Front Suspension Package (restrictions apply) includes 1-up front springs upgrade (unless maximum springs have been computer selected as included equipment)

High-Capacity Trailer Tow Package

(F-450/F-550 only; requires diesel engine; restrictions apply) includes 30,000-lb. GCWR for F-450 and 35,000-lb. GCWR for F-550, upgraded rear-axle gear set and trailer brake wiring (trailer brake controller not included)

Low Deflection Package (F-450/F-550 only; n/a on 141" WB) includes 2" spacer blocks; recommended for rear-biased loading)

Payload Downgrade Package (F-350 SRW/F-450/F-550 only; required on F-350 SRW with 17" wheels) includes a 9,800-lb. GVWR rating for F-350 SRW with 17" wheels, a 10,000-lb. GVWR rating for F-350 SRW with 18" wheels, a 15,000-lb. GVWR rating for F-450 and a 17,500-lb. GVWR rating for F-550

Payload Upgrade Package (F-550 with 141" WB, 6.8L gas engine and 4.88 limited-slip [LS] axle only) increases GVWR to 19,000 lbs. and includes upgraded frame and rear axle

Payload Plus Upgrade Package (F-550 with 4.88 limited-slip [LS] axle only; restrictions apply) increases GVWR to 19,500 lbs. and includes upgraded frame, rear axle and springs

Snow Plow Prep Package (restrictions apply) includes computer-selected springs for snow plow application and extra-heavy-duty alternator with diesel engine only

¹Trailer brake controller verified to be compatible with electrically actuated drum brakes and certain electric-over-hydraulic brake systems. See your Ford Dealer for details. ²Ford Licensed Accessory. See your dealer for limited warranty details.



17" Argent-Painted Steel
Optional: F-350 SRW (Fleet only)



17" 6-Spoke Cast-Aluminum
Standard: F-350 SRW



18" Cast-Aluminum
Optional: F-350 SRW



17" Argent-Painted Steel
Standard: F-350 DRW



17" Argent-Painted Steel
w/Stainless Steel Cover
Optional: F-350 DRW



17" Polished Forged-Aluminum
Optional: F-350 DRW



19.5" Argent-Painted Steel
Standard: F-450/F-550 DRW



19.5" Argent-Painted Steel
w/Stainless Steel Cover
Optional: F-450/F-550 DRW



19.5" Polished Forged-Aluminum
Optional: F-450/F-550 DRW

LARIAT



F-550 LARIAT SuperCab 4x2. Bronze Fire. Available and aftermarket upfit equipment.

LARIAT Crew Cab. Charcoal Black leather trim. Available equipment.

Includes all XLT features, plus:

Mechanical

6.7L Power Stroke® V8 Turbo Diesel B20-capable engine (F-450/F-550)

TorqShift® Heavy-Duty 6-speed SelectShift® automatic transmission (F-450/F-550)

Alternator – 200-amp extra-heavy-duty

Electronic shift-on-the-fly (ESOF) 4-Wheel-Drive System with auto/manual locking hubs (4x4 models only)

18" bright-machined cast-aluminum wheels (F-350 SRW)

17" polished forged-aluminum wheels (F-350 DRW)

19.5" polished forged-aluminum wheels (F-450/F-550)

LT275/65R18E all-season BSW tires (F-350 SRW)

Seating

Premium leather-trimmed 40/console/40 front bucket seats and flow-through center console with lockable storage, two 12-volt powerpoints and a 110-volt power outlet

Power 10-way driver and front-passenger seats

Interior

Premium Sound System includes AM/FM stereo/single-CD player with MP3 capability, digital clock and 8 speakers with subwoofer (SuperCab)

Premium Audio System from Sony® includes AM/FM stereo/single-CD player with MP3 capability, digital clock and 8 speakers with subwoofer (Crew Cab)

SYNC® with MyFord Touch® includes an 8" color LCD touch screen in center stack; dash-top closable storage with media hub (2 USB ports, SD card reader, audio/video input jacks, and 12-volt powerpoint); and SYNC Services¹

Autolock/unlock

Dual-zone electronic automatic temperature control

Message center – Driver-configurable enhanced information center with 4.2" LCD productivity screen includes gauge setup, trip computer, fuel economy and towing/off-road applications, SelectShift controls, halo lighting, and daytime illumination

Mirror – Auto-dimming rearview with compass

Power-adjustable pedals

Power outlet – 110-volt on instrument panel

Steering wheel – Color-coordinated leather-wrapped with 5-button message center control and secondary audio controls

Visors with illuminated driver and passenger mirrors

Window – Rear, power-sliding with privacy glass and defrost

Woodgrain-style instrument panel accents

Exterior

Autolamp with rainlamp feature

Door handles – Body-color

Fog lamps

Mirrors – PowerScope® power-telescoping/-folding trailer tow with power/heated glass, heated manual spotter mirrors, and integrated clearance lamps and turn signals

SecuriCode™ keyless entry keypad

Available Options

Mechanical

6.7L Power Stroke V8 Turbo Diesel B20-capable engine (F-350 only)

Alternators – Dual with 357-amp total (diesel engine only)

Engine block heater (standard in 15 cold-weather states)

Fuel tank – 28-gallon midship (n/a with 200" WB Crew Cab with gas engines)

Jack – 2-ton mechanical (F-350 SRW)

Jack – 4-ton hydraulic (F-350 DRW)

Jack – 6-ton hydraulic (F-450/F-550)

Power take-off (PTO) provision (6.8L gas and 6.7L diesel engines only; includes transmission-mounted live-drive and stationary modes with diesel engine only)

Rear axle – Electronic-locking (F-350 SRW only)

Rear axle – Limited-slip (DRW only)

Spare tire/wheel/jack

Tire Pressure Monitoring System delete (Fleet only)

LT245/75R17E all-terrain BSW tires – 6 (F-350 DRW)

LT245/75R17E all-terrain OWL tires – 4 (F-350 DRW)

LT275/70R18E all-terrain BSW tires – 4 (F-350 SRW 4x4)

LT275/70R18E all-terrain OWL tires – 4 (F-350 SRW 4x4)

225/70R19.5G BSW traction tires – 2 all-season tires and 4 traction tires (F-450/F-550)

225/70R19.5G max. traction BSW tires – 6 (F-450/F-550 4x4 only)

Seating

Premium leather-trimmed 40/20/40 split front seat with center under-seat lockable storage with 12-volt powerpoint, and center armrest with cupholders and storage

Heated rear outboard seats (Crew Cab only; requires LARIAT Interior Package)

Interior

Flooring – All-weather floor mats

Navigation System with HD Radio™ Technology and 5-years of SiriusXM Traffic and Travel Link

Rapid-heat supplemental cab heater (requires diesel engine and alternator upgrade)

Exterior

Cab steps – 6" angular black molded

Center high-mounted stop lamp (required for vehicles with GVWR less than 10,000 lbs.)

Crew Chief™ powered by Telogis®² – Fleet tracking system (includes 1 year of Crew Chief service)

Exterior back-up alarm²

Remote Start System

Splash guards/mud flaps (F-350 only; front only)

Transfer case skid plate (4x4 only)

Available Packages

LARIAT Interior Package includes power, heated/cooled driver's seat with easy entry/exit memory feature; power, heated/cooled passenger seat; memory PowerScope trailer tow mirrors; memory, power-adjustable pedals; and Remote Start System

16,000-lb. GVWR Package (F-450 only)

CNG/LPG Gaseous Engine Prep Package (F-350 with 6.2L gas engine only) includes hardened engine intake valves and valve seats and bi-fuel manifold

Extra-Heavy-Service Front Suspension Package (restrictions apply) includes 2-up front springs upgrade (unless maximum springs have been computer selected as included equipment)

Heavy-Service Front Suspension Package (restrictions apply) includes 1-up front springs upgrade (unless maximum springs have been computer selected as included equipment)

High-Capacity Trailer Tow Package (F-450/F-550 only; requires diesel engine; restrictions apply) includes 30,000-lb. GCWR for F-450 and 35,000-lb. GCWR for F-550, upgraded rear-axle gear set and trailer brake wiring (trailer brake controller not included)

Low Deflection Package (F-450/F-550 only; n/a on 141" WB) includes 2" spacer blocks; recommended for rear-biased loading

Payload Downgrade Package (F-350 SRW/F-450/F-550 only) includes a 10,000-lb. GVWR rating for F-350 SRW with 18" wheels, a 15,000-lb. GVWR rating for F-450 and a 17,500-lb. GVWR rating for F-550

Payload Plus Upgrade Package (F-550 with 4.88 limited-slip [LS] axle only; restrictions apply) increases GVWR to 19,500 lbs. and includes upgraded frame, rear axle and springs

Snow Plow Prep Package (restrictions apply) includes computer-selected springs for snow plow application and extra-heavy-duty alternator with diesel engine only

¹SYNC Services varies by trim level and model year and may require a subscription. Traffic alerts and turn-by-turn directions available in select markets. Message and data rates may apply. Ford Motor Company reserves the right to change or discontinue this product service at any time without prior notification or incurring any future obligation. ²Ford Licensed Accessory. See your dealer for limited warranty details.



18" Bright-Machined Cast-Aluminum
Standard: F-350 SRW



17" Polished Forged-Aluminum
Standard: F-350 DRW



19.5" Polished Forged-Aluminum
Standard: F-450/F-550 DRW

EXTERIORS



White Platinum Metallic Tri-coat



Oxford White



Ingot Silver



Vermillion Red



Ruby Red Metallic Tinted Clearcoat



Bronze Fire



Blue Jeans



Caribou



Magnetic



Green Gem



Tuxedo Black



Regular Cab



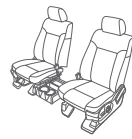
SuperCab



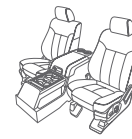
Crew Cab



40/20/40 split front seat



40/mini-console/40 front bucket seats



40/console/40 front bucket seats

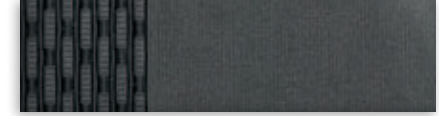
	Regular Cab	SuperCab	Crew Cab	40/20/40 split front seat	40/mini-console/40 front bucket seats	40/console/40 front bucket seats
XL	<input type="checkbox"/>	<input type="checkbox"/>	<input type="checkbox"/>	<input checked="" type="checkbox"/>	<input type="checkbox"/>	<input type="checkbox"/>
XLT	<input type="checkbox"/>	<input type="checkbox"/>	<input type="checkbox"/>	<input checked="" type="checkbox"/>	<input type="checkbox"/>	<input type="checkbox"/>
LARIAT	<input type="checkbox"/>	<input type="checkbox"/>	<input type="checkbox"/>	<input type="checkbox"/>	<input type="checkbox"/>	<input checked="" type="checkbox"/>

■ Standard □ Optional

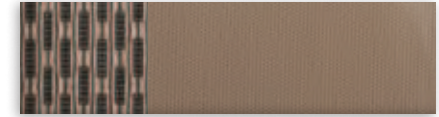
INTERIORS



1 Steel HD Vinyl



2 Steel Cloth



3 Adobe Cloth



4 Adobe Leather



5 Charcoal Black Leather

Exteriors	Interiors		
	XL	XLT	LARIAT
White Platinum Metallic Tri-coat ¹			4 5
Oxford White	1 2	2 3	4 5
Ingot Silver	1 2	2	5
Vermillion Red	1 2	2 3	4 5
Ruby Red Metallic Tinted Clearcoat ¹		3	4 5
Bronze Fire ²		3	4 5
Blue Jeans	1 2	2 3	4 5
Caribou ²	1 2	2 3	4 5
Magnetic	1 2	2	5
Green Gem	1 2	2 3	4 5
Tuxedo Black	1 2	2 3	4 5

¹Additional charge. ²Late availability. Colors are representative only. See your dealer for actual paint/trim options.



TECHNICAL SPECIFICATIONS

ENGINES

	6.7L V8 Power Stroke® Turbo Diesel	6.2L 2-Valve Gas V8 FFV¹	6.8L 3-Valve Gas V10
Configuration	OHV (32-valve)	SOHC	SOHC
Fuel injection	High-pressure common-rail	Sequential electronic	Sequential electronic
Engine control system	Electronic	Electronic	Electronic
Induction system	Single-sequential turbocharger with charged air cooler	Specially tuned	Specially tuned
Battery	Dual 12-volt; 750-CCA/78-amp-hr	12-volt; 650-CCA/72-amp-hr	12-volt; 750-CCA/78-amp-hr
Alternator	200-amp (dual combined 357-amp, optional)	157-amp	175-amp
Cooling system	Pressurized series flow	Pressurized series flow	Pressurized series flow
Oil-life monitor	Intelligent Oil-Life Monitor®	Oil-minder system	Oil-minder system
Cylinders	8	8	10
Cylinder head	Aluminum	Aluminum	Aluminum
Block material	Compacted graphite iron	Cast iron	Cast iron
Valve operation	Push rod/rocker arms	Roller-rocker shafts	Hydraulic roller
Camshaft drive	Gear	Silent chain	Silent chain
Bore	3.90"	4.02"	3.55"
Stroke	4.25"	3.74"	4.17"
Compression ratio	16.2:1	9.8:1	9.2:1
Horsepower @ rpm	300 @ 2,800	385 @ 5,500 ² /316 @ 4,179 ³	362 @ 4,750
Torque lb.-ft. @ rpm	660 @ 1,600	405 @ 4,500 ² /397 @ 4,179 ³	457 @ 3,250
Recommended fuel	Ultra-Low-Sulfur Diesel or B20 (containing 20% or less biodiesel)	Regular unleaded or E85	Regular unleaded

TRANSMISSIONS

Type	6-speed TorqShift® automatic with SelectShift® (6.7L diesel, 6.2L gas)		5-speed TorqShift automatic (6.8L gas)
Case material	Aluminum		Aluminum
PTO	Live-drive access on driver's side (diesel only)		Access on driver's side
Gear ratios	1st	3.97:1	3.11:1
	2nd	2.31:1	2.20:1
	3rd	1.51:1	1.55:1
	4th	1.14:1	1.00:1
	5th	0.85:1	0.71:1
	6th	0.67:1	—
	Reverse	3.12:1	2.88:1

5TH-WHEEL TOWING — MAXIMUM LOADED TRAILER WEIGHT RATINGS (LBS.)⁴

Engine	Axle Ratio	GCWR	F-350 SRW 4x2	F-350 DRW 4x2	F-350 SRW 4x4	F-350 DRW 4x4	F-450 DRW 4x2	F-450 DRW 4x4	F-550 DRW 4x2	F-550 DRW 4x4
Regular Cab 6.2L 2-valve Gas V8 FFV	3.73	19,000	12,400	—	12,100	—	—	—	—	—
	4.30	19,500 22,000 22,500	15,400	12,400 15,400	15,100	12,000 15,000	—	—	—	—
6.8L 3-valve Gas V10	4.88	26,000	—	—	—	—	18,300	18,000	18,300	18,000
6.7L Diesel V8	3.73	23,500 24,500	16,200	—	15,600	—	—	—	—	—
	4.10	24,500 26,000	—	16,600	—	16,200	—	—	—	—
	4.30	30,000 ⁵ 35,000	—	—	—	—	17,600 21,600	17,200	17,600	17,200
	4.88	35,000 ⁵	—	—	—	—	—	—	26,600 26,400	26,200 26,100
SuperCab 6.2L 2-valve Gas V8 FFV	3.73	19,000	12,100	—	11,700	—	—	—	—	—
	4.30	19,500 22,000 22,500	15,100	12,000	14,700	11,600	—	—	—	—
6.8L 3-valve Gas V10	4.88	26,000	—	—	—	—	17,900	17,600	17,900	17,600
6.7L Diesel V8	3.73	23,500 24,500	15,700	—	15,200	—	—	—	—	—
	4.10	24,500 26,000	—	16,300	—	15,800	—	—	—	—
	4.30	30,000 ⁵ 35,000	—	16,300	—	15,800	—	17,100 21,100	16,700 20,700	17,100
	4.88	35,000 ⁵	—	—	—	—	—	—	26,100 25,900	25,700 25,600
Crew Cab 6.2L 2-valve Gas V8 FFV	3.73	19,000	11,900	—	11,400	—	—	—	—	—
	4.30	19,500 22,000 22,500	14,900	11,800	14,300	11,400	—	—	—	—
6.8L 3-valve Gas V10	4.88	26,000	—	—	—	—	17,700	17,300	17,700	17,300
6.7L Diesel V8	3.73	23,500 24,500	15,300	—	14,900	—	—	—	—	—
	4.10	24,500 26,000	—	16,000	—	15,600	—	—	—	—
	4.30	30,000 ⁵ 35,000	—	16,000	—	15,600	—	16,900 20,900	16,500 20,500	16,900
	4.88	35,000 ⁵	—	—	—	—	—	—	25,900 25,700	25,500 25,400

¹Certified to SAE J1349. ²10,000 lbs. GVWR and under. ³10,001 lbs. GVWR and over. ⁴F-350 DRW/F-450/F-550 weights shown are for 141" wheelbase Regular Cab, 162" wheelbase SuperCab or 176" wheelbase Crew Cab models. For 165," 186," 189," 200" and 201" wheelbase models, weights may be somewhat less (usually not more than 200 lbs., or 400 lbs. with 201" wheelbase). ⁵Requires optional High-Capacity Trailer Tow Package.

Load rating represents maximum allowable weight of people, cargo and body equipment and is reduced by the weight of optional equipment.

5th-Wheel Towing Notes: Trailer weights shown assume 1,000 lbs. second-unit body weight. Be sure combined weight of vehicle and trailer does not exceed listed GCWR. Trailer kingpin weight should be 15-25% of total loaded trailer weight. Make sure that the vehicle payload (reduced by option weight) will accommodate trailer kingpin weight and the weight of passengers and cargo added to the towing vehicle. The addition of trailer kingpin weight, and the weight of passengers and cargo, cannot cause vehicle weights to exceed the rear GAWR (Gross Axle Weight Rating) or GVWR (Gross Vehicle Weight Rating). These ratings can be found on the vehicle's Safety Compliance Certification Label. See your Ford Dealer for conventional trailer weights.



TECHNICAL SPECIFICATIONS

DIMENSIONS & WEIGHTS

	Regular Cab											
	F-350 SRW 4x2/4x4	F-350 DRW ¹ 4x2/4x4	F-350 DRW ¹ 4x2/4x4	F-450 DRW 4x2/4x4	F-450 DRW 4x2/4x4	F-450 DRW 4x2/4x4	F-450 DRW 4x2/4x4	F-450 DRW 4x2/4x4	F-550 DRW 4x2/4x4	F-550 DRW 4x2/4x4	F-550 DRW 4x2/4x4	F-550 DRW 4x2/4x4
Wheelbase	140.8"	140.8"	164.8"	140.8"	164.8"	188.8"	200.8"	140.8"	164.8"	188.8"	200.8"	
Cab-to-axle	60"	60"	84"	60"	84"	108"	120"	60"	84"	108"	120"	
Exterior												
Height												
Top of cab to ground	76.9"/79.9"	77.3"/80.3"	77.3"/80.3"	80.3"/80.4"	80.4"	80.6"/80.4"	80.6"/80.5"	80.4"/80.5"	80.7"/80.5"	80.7"	80.9"/80.7"	
Top of frame to ground	32.0"/34.2"	32.6"/34.7"	32.3"/34.2"	33.2"/33.4"	33.0"	32.8"/32.9"	32.8"	33.7"/33.8"	33.4"	33.3"/33.2"	33.2"	
Width												
Between frame rails	34.1"	34.1"	34.1"	34.2"	34.2"	34.2"	34.2"	34.2"	34.2"	34.2"	34.2"	
Axle clearance	8.6"	8.2"/8.1"	8.2"	8.1"/8.0"	8.1"	8.1"/8.0"	8.1"	8.4"	8.4"	8.4"	8.4"	
Front track	68.3"	68.3"	68.3"	74.8"	74.8"	74.8"	74.8"	74.8"	74.8"	74.8"	74.8"	
Rear tire outside width	79.6"	92.2"	92.2"	93.9"	93.9"	93.9"	93.9"	93.9"	93.9"	93.9"	93.9"	
Overall length	226.5"	226.5"	250.5"	226.5"	250.5"	274.5"	286.5"	226.5"	250.5"	274.5"	286.5"	
Interior (front/rear)												
Head room	40.7"/-	40.7"/-	40.7"/-	40.7"/-	40.7"/-	40.7"/-	40.7"/-	40.7"/-	40.7"/-	40.7"/-	40.7"/-	
Shoulder room	68.0"/-	68.0"/-	68.0"/-	68.0"/-	68.0"/-	68.0"/-	68.0"/-	68.0"/-	68.0"/-	68.0"/-	68.0"/-	
Hip room	67.6"/-	67.6"/-	67.6"/-	67.6"/-	67.6"/-	67.6"/-	67.6"/-	67.6"/-	67.6"/-	67.6"/-	67.6"/-	
Leg room	41.1"/-	41.1"/-	41.1"/-	41.1"/-	41.1"/-	41.1"/-	41.1"/-	41.1"/-	41.1"/-	41.1"/-	41.1"/-	
Weights (lbs.)												
Max. GVWR ²	11,000/11,100	14,000	14,000	16,500	16,500	16,500	16,500	19,500	19,500	19,500	19,500	
Max. payload ²	4,723/4,360	7,872/7,541	7,872/7,440	9,945/9,651	9,815/9,495	9,575/9,223	9,486/9,188	12,300/11,973	12,660/12,321	12,471/12,150	12,410/12,049	

SuperCab						Crew Cab					
F-350 SRW 4x2/4x4	F-350 DRW ¹ 4x2/4x4	F-450 DRW 4x2/4x4	F-450 DRW 4x2/4x4	F-550 DRW 4x2/4x4	F-550 DRW 4x2/4x4	F-350 SRW 4x2/4x4	F-350 DRW ¹ 4x2/4x4	F-450 DRW 4x2/4x4	F-450 DRW 4x2/4x4	F-550 DRW 4x2/4x4	F-550 DRW 4x2/4x4
161.8"	161.8"	161.8"	185.8"	161.8"	185.8"	176.2"	176.2"	176.2"	200.2"	176.2"	200.2"
60"	60"	60"	84"	60"	84"	60"	60"	60"	84"	60"	84"
76.7"/79.7"	77.0"/80.1"	80.3"	80.4"	80.4"	80.5"	77.7"/80.5"	78.0"/80.8"	80.6"	80.6"	80.8"	80.9"/80.8"
31.7"/33.5"	32.2"/34.1"	32.9"/32.8"	32.8"/32.7"	33.4"/33.3"	33.3"/33.2"	31.4"/33.3"	32.1"/34.0"	32.9"/32.8"	32.8"/32.7"	33.3"	33.2"
34.1"	34.1"	34.2"	34.2"	34.2"	34.2"	34.1"	34.1"	34.2"	34.2"	34.2"	34.2"
8.6"	8.2"	8.0"	8.0"	8.4"	8.4"	8.6"	8.2"	8.0"	8.0"	8.4"	8.4"
68.3"	68.3"	74.8"	74.8"	74.8"	74.8"	68.3"	68.3"	74.8"	74.8"	74.8"	74.8"
79.6"	92.2"	93.9"	93.9"	93.9"	93.9"	79.6"	92.2"	93.9"	93.9"	93.9"	93.9"
247.5"	247.5"	247.5"	271.5"	247.5"	271.5"	261.9"	261.9"	261.9"	285.9"	261.9"	285.9"
40.7"/38.1"	40.7"/38.1"	40.7"/38.1"	40.7"/38.1"	40.7"/38.1"	40.7"/38.1"	40.7"/40.8"	40.7"/40.8"	40.7"/40.8"	40.7"/40.8"	40.7"/40.8"	40.7"/40.8"
68.0"/68.1"	68.0"/68.1"	68.0"/68.1"	68.0"/68.1"	68.0"/68.1"	68.0"/68.1"	68.0"	68.0"	68.0"	68.0"	68.0"	68.0"
67.6"/67.3"	67.6"/67.3"	67.6"/67.3"	67.6"/67.3"	67.6"/67.3"	67.6"/67.3"	67.6"	67.6"	67.6"	67.6"	67.6"	67.6"
41.1"/31.6"	41.1"/31.6"	41.1"/31.6"	41.1"/31.6"	41.1"/31.6"	41.1"/31.6"	41.1"/42.1"	41.1"/42.1"	41.1"/42.1"	41.1"/42.1"	41.1"/42.1"	41.1"/42.1"
11,500	14,000	16,500	16,500	19,500	19,500	11,500	14,000	16,500	16,500	19,500	19,500
4,772/4,323	7,619/7,126	9,523/9,194	9,269/8,991	12,382/12,012	12,214/11,924	4,496/4,057	7,361/6,932	9,325/8,977	9,197/8,846	12,250/11,800	12,015/11,691

SRW = single rear wheel DRW = dual rear wheel

MECHANICAL

Front Suspension	
Type	Twin-I-Beam (F-350 4x2); solid Twin-Coil Monobeam axle (F-350 4x4, F-450/F-550)
Axle (rating @ ground)	5,250 lbs. (F-350 4x2); 6,000 lbs. (F-350 4x4); 7,000 lbs. (F-450/F-550)
Springs	Coil
Shock absorbers	1.38" gas type
Stabilizer bar	Standard
Rear Suspension	
Type	Solid axle
Axle (rating @ ground)	7,280 lbs. (F-350 SRW); 9,750 lbs. (F-350 DRW); 13,660 lbs. (F-450/F-550)
Springs	Leaf
Shock absorbers	1.38" gas type
Stabilizer bar	Standard
Steering	
Type	Parallel linkage (F-350 4x2); cross-tie linkage (4x4 and F-450/F-550 4x2)
Assist	Power
Overall ratio	20.49:1 (F-350 4x2); 20.41:1 (F-350 4x4); 17.8:1 average (F-450/F-550)
Brakes	
Type	Power 4-wheel vented-disc ABS (standard)
Front Rotor diameter	14.29" (F-350); 14.53" (F-450/F-550)
Lining area (sq. in.)	59.7 (F-350); 55.6 (F-450/F-550)
Rear Rotor diameter	14.29" (F-350); 15.35" (F-450/F-550)
Lining area (sq. in.)	45.8 (F-350); 55.6 (F-450/F-550)
Wheels	
Type	Steel (standard); aluminum (optional)
Size	17" SRW/DRW, 18" SRW (F-350); 19.5" (F-450/F-550)
Number of studs	8 (F-350); 10 (F-450/F-550)
Bolt-circle diameter	6.69" (F-350 SRW); 7.87" (F-350 DRW); 8.85" (F-450/F-550)

¹Ambulance Prep Package F-350 DRW: tire front track is 74.1"; rear tire outside width is 95.2" ²When properly equipped.



2015
SUPER DUTY® CHASSIS CAB



ford.com

New Vehicle Limited Warranty. We want your Ford F-Series Super Duty® Chassis Cab ownership experience to be the best it can be. Under this warranty, your new vehicle comes with 3-year/36,000-mile bumper-to-bumper coverage, 5-year/60,000-mile Powertrain Warranty coverage, 5-year/60,000-mile safety restraint coverage, and 5-year/unlimited-mile corrosion (perforation) coverage – all with no deductible. The Ford 6.7L Power Stroke® diesel engine gets 5-year/100,000-mile warranty coverage. Please ask your Ford Dealer for a copy of this limited warranty.

Roadside Assistance. Covers your vehicle for 5 years or 60,000 miles, so you have the security of knowing that help may be only a phone call away should you run out of fuel, lock yourself out of the vehicle or need towing. Your Ford Dealer can provide complete details on all of these advantages.

Business Preferred Network. Each of the select dealerships in our Business Preferred Network (BPN) is committed to providing quality commercial-oriented products and service, as well as special financing and billing arrangements, to businesses that rely on Ford products. As a BPN customer, your business vehicles receive priority service at your BPN dealership to help get your vehicle back on the road quickly.

Financial Services. Our commercial purchase plans and lines of credit offer attractive rates, negotiable terms and business-friendly options. If you prefer to lease, our CommercialLease™ programs offer a wide variety of package options to meet your needs. For additional information, please visit our website at fordcredit.com/comlend.

Ford Credit. Get the ride you want. Whether you plan to lease or finance, you'll find the choices that are right for you at Ford Credit. Ask your Ford Dealer for details or check us out at fordcredit.com.

Ford Extended Service Plan. For a purchase or lease, the Ford Extended Service Plan (ESP) gives you peace-of-mind protection designed to cover key vehicle components and protect you from the cost of unexpected repairs. Ask your dealer for a Ford ESP, the only service contract backed exclusively by Ford and honored at all Ford dealerships.

Comparisons based on competitive models (Class 3–5 Conventional Chassis Cabs), publicly available information and Ford certification data at time of release. Some features discussed may be optional. Vehicles shown may contain optional and aftermarket upfit equipment. Features shown may be offered only in combination with other options or subject to additional ordering requirements or limitations. Dimensions and capability ratings shown may vary due to optional features and/or production variability. Following release of the PDF, certain changes in standard equipment, options and the like, or product delays may have occurred which would not be included in these pages. Your Ford Dealer is the best source for up-to-date information. Ford Division reserves the right to change product specifications at any time without incurring obligations. Body manufacturers are responsible for compliance certification of the completed vehicle. The Ford New Vehicle Limited Warranty and any government certification made by Ford shall cover only the vehicle as manufactured by Ford and shall not extend to any addition, modification or change of or to the vehicle by the Ford Authorized Pool Account.

After trial period expires, SiriusXM Satellite Radio, SiriusXM Traffic and Travel Link subscriptions are sold separately or as a package, and are continuous until you call SiriusXM to cancel. See SiriusXM Customer Agreement for complete terms at www.siriusxm.com. SiriusXM Traffic and Travel Link available in select markets. For more information, see www.siriusxm.com/travellink or www.siriusxm.com/traffic. Sirius, XM and all related marks and logos are trademarks of Sirius XM Radio Inc. HD Radio is a proprietary trademark of iBiquity Digital Corp. Sony is a registered trademark of the Sony Corporation.

Follow Ford:

